

Quick Start Guide



Pocket PC Phone

Congratulations on the purchase of your new **Windows Mobile™-based Pocket PC Phone!** This information will help you set up your phone so you can begin using it.

Warnings! Please Read Before Operating your Device



THE DEVICE IS NOT CHARGED WHEN YOU TAKE IT OUT OF THE BOX. (For information, see *Step 2: Charge the battery* below)



DO NOT REMOVE THE BATTERY PACK WHEN THE DEVICE IS CHARGING.




WHEN INSERTING YOUR SIM CARD, MAKE SURE THE DEVICE IS POWERED-OFF BEFORE YOU REMOVE THE BATTERY PACK. THEN CLICKS IT INTO PLACE. (For more information, see *Step 1: Insert the SIM card* below)



IN MANY COUNTRIES YOU ARE REQUIRED BY LAW TO TURN OFF YOUR PHONE WHEN YOU FLY. TURNING OFF YOUR POCKET PC DOESN'T TURN OFF YOUR PHONE; YOU MUST TURN OFF YOUR WIRELESS CONNECTION TO YOUR OPERATOR'S NETWORK.



YOUR WARRANTY IS INVALIDATED IF YOU OPEN OR TAMPER WITH THE DEVICE'S OUTER CASING. (For more information, see the enclosed warranty information)

- 
- **The Basics**
 - **Setting Up**
 - **Navigating**
 - **Using for the First Time**
 - **Secure your Pocket PC phone**

Front , Top and Left Side Panel Components

Power Button / Backlight

Press to turn on / off your pocket PC or backlight.

Notification LED

See the description on the opposite.

Contacts

Press for quick access to your Contacts.

Record

Press to record a voice note.

Volume

Press up/down to adjust the volume of your device.

Camera

Press to launch camera capture utility. Press again to take a picture.

Soft Reset

Press into the hole with the stylus to reset your device.

Send

Press to take an incoming call, or press to dial a number.

Microphone

Speak here when receiving / making a phone call or voice recording.

MMC/SD cards or SDIO accessories slot

Insert either MMC/SD cards or SDIO accessories in this slot.

Infrared port

Enables you to exchange file(s) or data with other devices without cables/ wires.

Speaker

Listen to audio media or a phone call from here.

Calendar

Press to quickly access to the Calendar.

Touch Screen

For handwriting, drawing or to make a selection with the stylus.

End

Press to end a call.

Navigation Pad

To move up/ down and left/ right through any of the drop down menus or program instructions; select by pressing in the center.

When in the Dialer screen :

Left - Press once to access the Speed Dial feature.

Right- Press once to access the Call Log feature.



Back, Bottom and Right Side Panel Components

Stylus and Stylus Slot

Notification LED

Bi-color LED on the right :

For GSM standby, SMS message, GSM network status, PDA notification, PDA charging status.

Blue LED on the left :

For Bluetooth system notification of powered-on and ready to transmit RF signal.

Soft Reset

Press into the hole with the stylus to reset your device.

Sync Connector

Use this connector when synchronizing / transmitting data or recharging.

Camera Lens

Car Antenna

If your car supports, you can attach your phone to its antenna and utilize its superior reception quality.

Preview Mirror

Back Cover

Fixing Lock

Press to release the back cover.

Earphone Jack

Allows you to listen to audio media or use the phone hands-free kit.

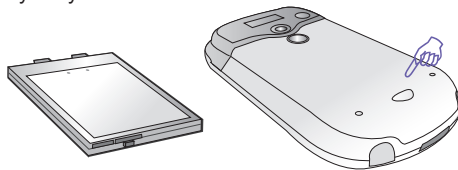


Step 1 : Insert the SIM card

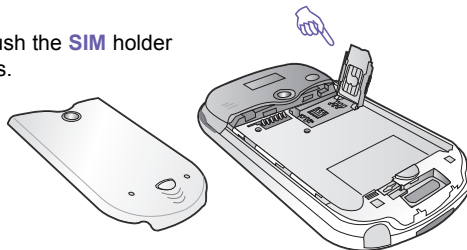
Follow the steps outlined below to set up your phone and get it ready to synchronize with your PC:



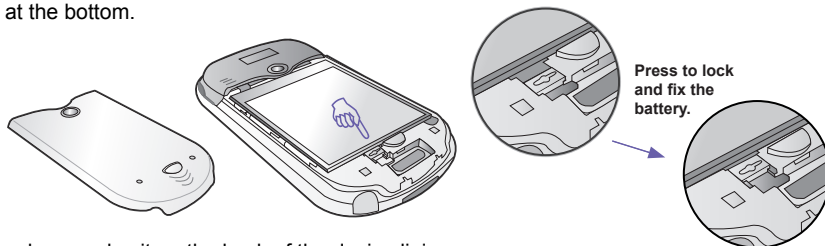
- 1 Take out your Pocket PC Phone and the main battery from the gift-box, then turn over your Pocket PC Phone and press the fixing lock button to remove the back cover.



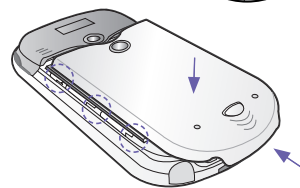
- 2 Lift up the **SIM** card case and insert the **SIM**. Push the **SIM** holder down, then push towards the middle until it clicks.



- 3 Place the battery and don't forget to push back the **red** lock point to clip it into place at the bottom.



- 4 To replace the back cover, lay it on the back of the device lining up the grips on the side of the back cover with the slots on the side of the device. Finally, slide forward to slot into place.

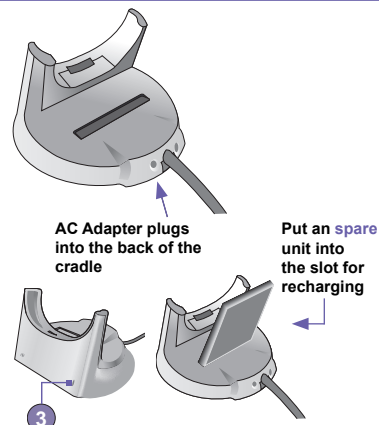


DO NOT TRY TO SLOT THE GRIPS ON THE TOP OF THE DEVICE INTO PLACE FIRST.

Step 2 : Charge the Battery

Before using your Pocket PC phone, charge the battery for at least **8** hours for the first time, then, place it in the cradle for a short time each day to recharge it to its full capacity.


- 1 Insert the AC adapter into the back of the cradle, and then plug into the mains.
- 2 Dock your Pocket PC phone in its cradle and fully charge for at least **8** hours for the first time. A steady amber LED on the right top of your device indicates charging; solid green fully charged.
- 3 If you have spare battery for your Pocket PC Phone, you can also put your battery into the slot in the cradle for recharging. Refer to the LED light on the right of the cradle for recharging notification.

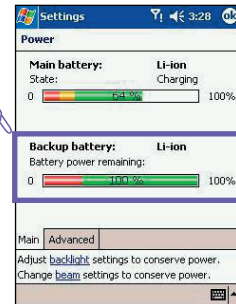


It is vital to keep your battery charged. Because your Pocket PC does not have a hard drive, all data and any new programs you install are stored in RAM. If the battery completely drains any data or new programs you installed will be erased. Only the default programs on the device when you bought it will remain.

To prevent this kind of data loss, a portion of the main battery will keep your data safe for **72 hours** if your device runs out of power. An additional battery, the backup battery, is designed to keep your data safe when you remove the main battery. It will keep this data safe for **20 minutes**.



BE SURE TO CHECK THE BACKUP BATTERY POWER REMAINS AT LEAST AT 50% OR ABOVE BEFORE YOU REMOVE THE MAIN BATTERY BY TAPPING  **→ Settings → System tab → Power.**



WARNING : To reduce risk of fire or burns, do not disassemble, crush, puncture, short external contacts, heat above 100°C (212°F), or dispose of in fire or water. Replace only with manufacturer specified batteries. Recycle or dispose of used batteries to the local regulations.



Step 3 : Switching on and Entering your PIN

Once you have fully charged your device, you can switch it on. First time, it is however recommended that you fully charge your device about 8 hour - before switching it on.



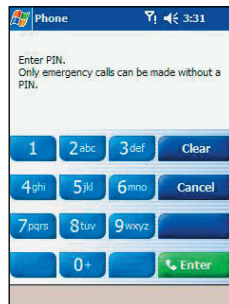
- 1 Press the power button on top of the device to turn on your Pocket PC phone – wait for your operator and Microsoft screens to load.



- 2 Remove the stylus from its housing.

- 3 When the **Welcome Wizard Screen** appears, tap with your stylus. The wizard's onscreen instructions will lead you through the rest of the setup process.

- 4 When finish the settings in **Welcome Wizard**, a phone dialer screen will appear → Enter your **PIN**, and then tap **Enter**.




IN MANY COUNTRIES YOU ARE REQUIRED BY LAW TO TURN OFF YOUR PHONE WHEN YOU FLY. TURNING OFF YOUR POCKET PC DOESN'T TURN OFF YOUR PHONE; YOU MUST TURN OFF YOUR WIRELESS CONNECTION TO YOUR OPERATOR'S NETWORK.



To turn the phone on and off :



- 1 While using any program on your device, tap  in the title bar at the top of the phone's display.
- 2 Tap **Turn on** or **Turn off** option in the pop-up menu.

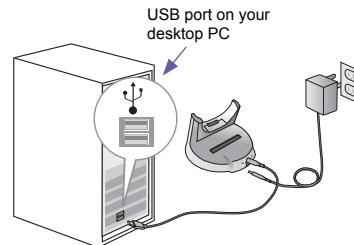
Step 4 : Installing ActiveSync

Using **Microsoft® ActiveSync®** you can synchronize information on your desktop computer and/or a **Microsoft® Exchange Server** with the information on your Pocket PC phone. **ActiveSync** compares the information on your Pocket PC phone with the information on your desktop computer and/or the server and updates all locations, keeping you up-to-date with the most recent information.

Before you can begin synchronization with your desktop PC, you must install **ActiveSync** on your desktop computer from the **Pocket PC phone 2003 Companion CD**. **ActiveSync** is already installed on your Pocket PC phone.

Hardware Connection

Dock your Pocket PC phone in its cradle and plug the USB/Serial to your desktop PC for synchronization.



Software Installation



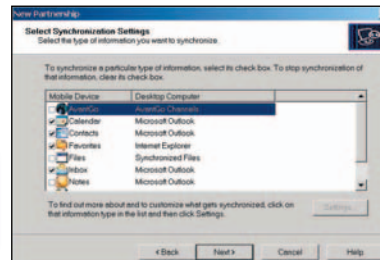
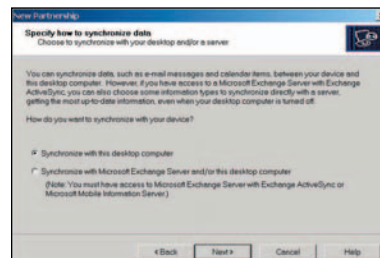
- 1 Insert the **Pocket PC phone 2003 Companion CD** into the CD-ROM drive of your desktop computer.
- 2 Click the yellow arrow, click **Start Here**, and then follow the directions on the screen.

To Create a Partnership

After the installation is completed, the **ActiveSync New Partnership Wizard** will help you set up a partnership between your phone and your desktop computer so that you can start synchronizing information and customizing your synchronization settings. Your first synchronization process will automatically begin when you finish using the wizard. After the first synchronization, you will notice that your **Outlook** information now appears on your phone.




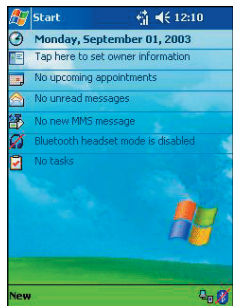
To prevent synchronization problems, it is important that you select **Synchronize** with this desktop in the **New Partnership Wizard** options.



Navigating

Using the Today screen

When you turn on your device for the first time each day (or after 4 hours of inactivity), you'll see the **Today** screen. You can also display it by tapping  and then **Today**. On the **Today** screen, you can see at glance important information for the day.



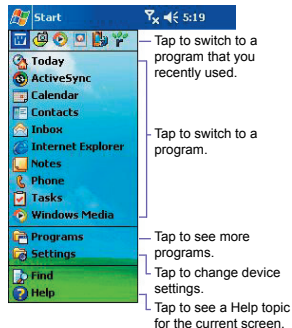
Navigation options from the Today screen

The center of the **Today** screen displays your next appointment, the number of messages in Inbox, and your current profile. You can scroll to one of these items and press the **Action** key, or simply tap it with your stylus.

Navigation bar and Command bar

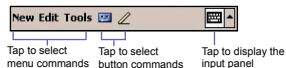
The navigation bar is located at the top of the screen. It displays the active program and current time, and allows you to switch to programs and close screens.

Use the command bar at the bottom of the screen to perform tasks in programs. The command bar includes menu names, buttons, and the Input Panel button. To create a new item in the current program, tap **New**. To see the name of a button, tap and hold the stylus on the button. Drag the stylus off the button so that the command is not carried out.



Pop up menus

With pop up menus, you can quickly choose an action for an item. For example, you can use the pop up menu in the contact list to quickly delete a contact, make a copy of a contact, or send an e-mail message to a contact. The actions in the pop up menus vary from program to program. To access a pop up menu, tap and hold the stylus on the item name that you want to perform the action on. When the menu appears, lift the stylus, and tap the action you want to perform. Or tap anywhere outside the menu to close the menu without performing an action.



Navigation pad


Use the navigation pad to move the selection focus up, down, left, or right. This is called "scrolling." In a text field, use the navigation pad to move the cursor right or left, character by character.

Stylus and Touch screen

Your device has a touch screen meaning you can navigate and make selections on your device by tapping an item with the stylus or your finger.

Hard keys

There are seven hard keys on your phone, located directly below and above the display screen, and on the side. By default the two above the screen are set as **Calendar** and **Contacts** and the three on the side **Recorder**, **Volume** and **Camera**, however, they can be reprogrammed (The send and answer a call keys on either side of the navigation pad cannot be reassigned):

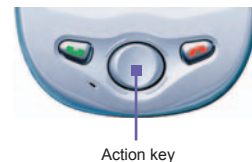
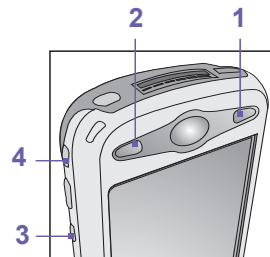
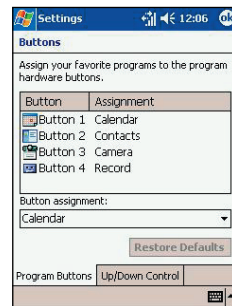
- 1 Tap **Start**  → **Settings** → **Personal** → and **Buttons**.
- 2 Select a button from the top box and a program from the bottom box.

Action key


Press the Action key to open a selected item, or to select or clear a check box. The Action key works much like the **ENTER** key on a keyboard, and is sometimes referred to as the "Do It" key.














To navigate to a program











- 1 On the **Today** screen, tap in the top left hand corner for the navigation bar.
- 2 Select the program you want, and tap it or press the **Action** button.



Programs Menu







The main features of the programs menu are listed below. To access them simply tap  → **Programs**.







Icon	Program	Description
	Active-Sync	Synchronizes information between your device and PC.
	Calendar	Keeps track of your appointments and creates meeting requests.
	Contacts	Keeps track of your friends and colleagues.
	Inbox	Sends and receives e-mail/ SMS messages.
	Pocket IE	Pocket Internet Explorer browses Web and WAP sites, and downloads new programs and files from the Internet.
	Notes	Creates handwritten or typed notes, drawings, and recordings.
	Phone	Makes and receives calls, switches between calls and sets up conference calling.
	Tasks	Keeps track of your tasks.
	Windows Media Player	Enables the multimedia function on your Pocket PC Phone.
	Pocket Excel	Creates new workbooks or view and edit Excel workbooks.
	Pocket Word	Creates new documents or view and edit MS-Word documents.
	MSN Messenger	Sends and receives instant messages with your MSN Messenger contacts.
	Microsoft Reader	Collects and reads e-Books on your device.

Icon	Program	Description
	Camera	Snaps photos or shoots video clips with accompanying audio.
	Album	Collects, organizes and sorts .JPG/.BMP/.GIF picture files on your Pocket PC phone from Camera or ActiveSync .
	Photo Contacts	Input the image files according to your Contacts list and set up the Caller-ID function
	MMS	Send and receive MMS messages.
	Calculator	Performs basic arithmetic, such as addition, subtraction, multiplication, and division.
	Games	Two games, Jawbreaker and Solitaire are included in this folder by default.
	Wireless Modem	Enable your device as an external modem for a PC or Notebook by using a serial/USB port, or infrared.
	SIM Manager	Collects, organizes and sorts the Contacts list stored in your SIM card.
	xBackup	Back up your Pocket PC Phone files to ROM or an SD card
	Pictures	Collects, organizes and sorts .jpg picture files on your Pocket PC phone or on a storage card.


Indicators



Following are some of the status icons you may see.

Indicators	Meaning
	Turns all sounds on and off.
	Main battery low.
	Main battery very low.
	Connection is active.
	Synchronization is beginning or ending.
	Synchronization is occurring.


Indicators	Meaning
	Shows the connection to your mobile phone service provider is on and the strength of the signal.
	Indicates your phone is switched off.
	Notification that one or more mobile e-mail / SMS messages were received.
	Notification that one or more instant messages were received.
	Call missed.
	If more notification icons need to be displayed and there is no room to display them, than this indicator will display. Tap the icon to view all notification icons.

Phone Volume

To adjust the phone volume, tap  or press the volume button up/down on the side of your device.

- You can select to adjust the volume on the pop-up menu :
 - Phone volume**  : for the volume of incoming call ring.
 - Device volume**  : for notification levels and MP3.





To mute your phone if, for example, you are in a meeting, just tap  and select **Off**.

- To adjust the conversation phone volume, you must do it during a call.



Make your first call




To make a call from Dialer

- 1 Press **Send** button  to bring up the dialer screen.
- 2 Dial the number you want to call using the keypad.
- 3 Press the **Talk** key .

To make a call from Contacts

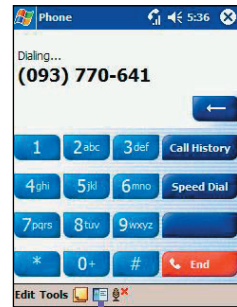
After the first synchronization described on the [Step 4](#) of Settings, you will notice that your **Outlook Contacts** information now appears on your phone if you checked the **Contacts** item when setting up the synchronized options.

You can make a call from **Contacts** in the following ways :

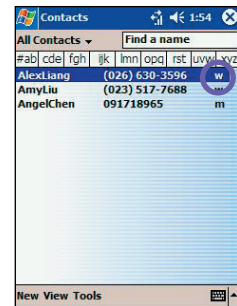
- 1 Tap  on the menu bar on the bottom of the phone dialer screen to bring up the **Contacts** list, find the contact and then tap the left button  twice -- once to send to the dialer screen and once to call.
- 2 To bring up the **Contacts** list, you can also press the **Contacts** button on the right top of your device, find the contact and then tap the left button  twice -- once to send to the dialer screen and once to call.



The pop up **Contacts** list will by default display **Call Work Tel.** However, you can customize so that the mobile number or e-mail is displayed instead. For the details of customizing, see [Chapter 3](#).






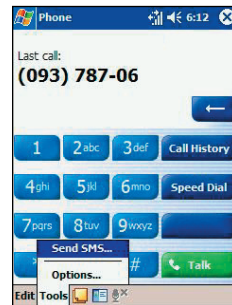
Tap to bring up the **Contacts** list.



New View Tools

Write your first text message - SMS

- 1 Press **Send** button  to bring up the dialer screen.
- 2 Tap **Tools** → and then select **Send SMS** in the dialer screen.
- 3 In the **TO** field, enter **SMS** number of one or more recipients, separating them with a semicolon, or select a name from the contact list by tapping the **Address Book** button .
- 4 Compose your message. Tap **Send** .




To enter preset or frequently used message, tap **My Text** and select a message.

Set up to access e-mail, WAP and the Internet

Setting up your phone for using the **Internet**, **e-mail** and **WAP** is one of the most important things you will have to do. However, once done, you will be able to access a world of information anywhere, all at the touch of a few keys.

You can use **GPRS** to connect to your mobile ISP :

- 1 Obtain the necessary settings information from your ISP like **ISP server phone number**, **user name**, and **password**
- 2 Tap  → **Setting** → **Connections** tab → **Connections**
- 3 In **My ISP**, tap **Add a new modem connection**.
- 4 Create a modem connection.



Wireless connections can be made via a mobile phone network or **GPRS**. If you are using a mobile phone network to connect, in the **Select a modem list**, tap **Cellular Line**. If you are using **GPRS**, tap **Cellular Line (GPRS)**.




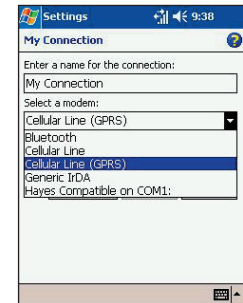
- 5 To start the connection, begin using the desired program. For example, switch to **Pocket Internet Explorer** and browse to a Web page. Your device will automatically connect.



- To set up a network card or wireless network connection to your **ISP**, add a new connection under **My Work Network**.
- To change an existing modem connection settings, in either **My ISP** or **My Work Network**, tap **Manage existing connections**. Select the desired modem connection, tap **Settings**, and follow the instructions on the screen.



To view additional information for any screen in the ward or while changing settings, tap .









Your First Browsing in Internet Explorer

Switch to **Pocket Internet Explorer** and browse to a Web page. Your device will automatically connect.

To browse the Internet



- 1 Tap  → and then **Internet Explorer**.
- 2 In the address bar that appears at the top of the screen, enter the Web address you want to visit.
- 3 Tap  Go to the web address you entered.
- 4 Tap  the **Favorites** button, and then tap the favorite you want to view.
- 5 Tap  to go back to the **Homepage** you set.
- 6 Tap  to refresh the web page on the screen.
- 7 Tap the arrow  to choose from previously entered addresses.



To view mobile favorites and channels



- 1 Tap the **Favorites** button to display your list of favorites.
- 2 Tap the page you want to view.
- 3 You will see the page that was downloaded the last time you synchronized with your PC. If the page is not on your device, the favorite will be dimmed. You will need to synchronize with your PC again to download the page to your device, or connect to the Internet to view the page.



To add a favorite link while using the device, go to the page you want to add, tap and hold on the page, and tap **Add to Favorites**.


Setting up your e-mail account

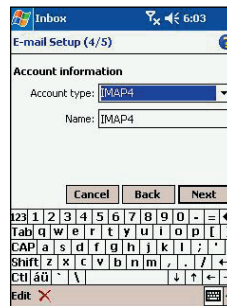
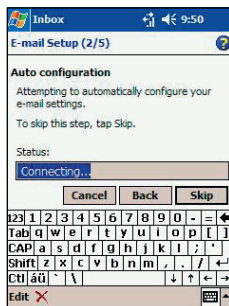
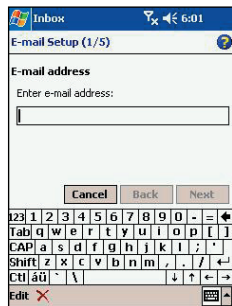


- 1 Prepare your e-mail account details.
- 2 In **Inbox** on your device, tap **Accounts**, and then **New Account**. Follow the directions in the **New Account wizard Press Menu**, scroll to **Options**, press **Action** and then enter E-mail setup.
- 3 To fill you e-mail address in the field, and then tap **Next**.






Next will initiate **auto-configuration** which attempts to connect your Pocket PC Phone to your e-mail server and automatically download the necessary e-mail connection settings.

- If **auto-configuration** is successful you can immediately begin sending/receiving e-mails.
 - If **auto-configuration** is unsuccessful you will need to manually enter the settings.
- 4 Enter “Your name”, your “User name” and “Password” then tap **Next**.
 - 5 From the drop down menu select the “**Service type**” that your e-mail provider supports (**POP3** or **IMAP4**).
 - 6 Enter a “Name” for your e-mail account then tap **Next**
 - 7 Enter the your e-mail provider’s server name information for Incoming mail and Outgoing mail, then tap **Finish**. For an explanation of a screen, tap  and then **Help**. When finished, to connect to your e-mail server, tap **Accounts** and then **Connect**.
 - 8 When you have finished, you will see the Set-up Complete screen. Press **Finish** to save the account. You can repeat the process for as many accounts as you wish to setup.




Send your first e-mail

- 1 Tap  → **Inbox**
 - 2 The screen below will appear, the tap **New**.
 - 3 In the **TO** field, enter either e-mail address or **SMS** number of one or more recipients, separating them with a semicolon, or select a name from the contact list by tapping the **Address Book** button. All e-mail addresses entered in the e-mail fields in **Contacts** appear in the **Address Book**.
 - 4 Compose your message. Tap **Send**.
- To enter preset or frequently used message, tap  **My Text** and select a message.
- 5 For immediately sending out this message, tap  on the toolbar to start sending or receiving task.



Write your first MMS




- 1 Tap  → **Programs** → **MMS Composer**,
- 2 Or, the **Today** screen offers another way of accessing **MMS Composer**.

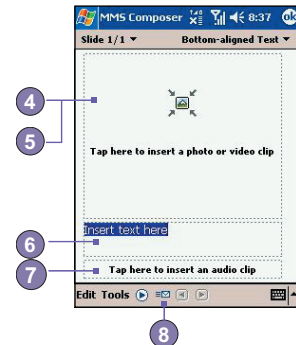
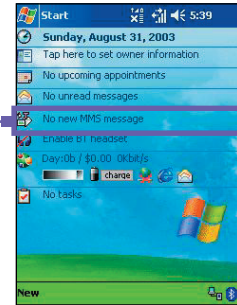
- 3 In **MMS Composer** screen, tap **New** to create a new **MMS** message.
- 4 Tap the **"Tap here to insert a photo or video clip"** box to select a specific location that contains photos/videos to add a picture or video clip.
- 5 Choose either **Photos** or **Videos** from this pull-down → Tap the specific photo or video clip that you want to add, then tap **Select**. You can only add either a single photo or video clip to each individual slide.



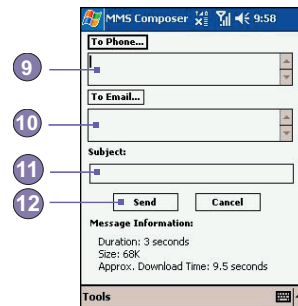
To take a new picture or video clip press the **Camera** icon. The picture or video clip will be automatically inserted.

- 6 Tap in the **Insert text here** box then enter the text you want to send. Or tap and hold in the **Insert text here** box until a menu pops up to select a "canned" text. Follow the process on the menu.
- 7 Tap in the **Tap here to insert an audio clip** box to add a audio clip from the drop-down menu → tap the specific audio clip that you want to add, then tap **Select**.
- 8 Tap  when you're ready to send your message.

Tap anywhere here can also access the **MMS Composer** to send a **MMS** message.



- 9 Enter in the recipient's phone number → Tap **To Phone** to see your phone book.
- 10 Enter in the recipient's e-mail address → Tap **To e-mail** to see your address book.
- 11 Enter in a subject of your message.
- 12 When you're ready, tap **Send**. Otherwise, tap **Cancel**.

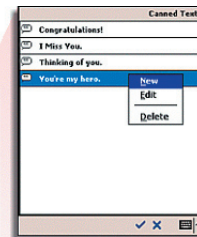
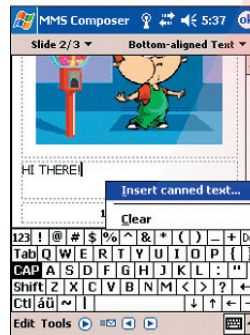


Before your **MMS** message can be sent, you need to set up the **MMS** connection first, for the details of settings, please refer to **Chapter 8 in user manual**.

To insert canned text:



- 1 Tap and hold in the **Insert text here** box until a menu pops up..
- 2 Tap **Insert canned text** from the pop-up menu.
- 3 Select a phrase from the list and tap **Select**.
- 4 To add new, edit or delete existing canned text, tap and hold on the canned text screen.



Take your first photo

There are two ways to enter the **Camera** mode :

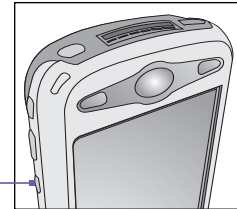
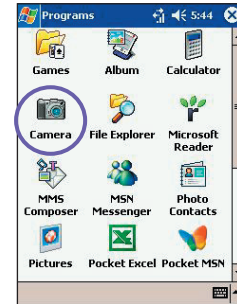


- 1 Tap → **Program** → **Camera**.
- 2 Or just press the lowest button on the left side of your device.

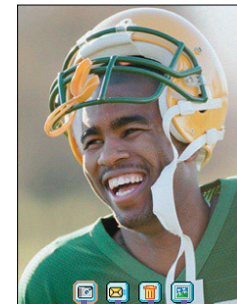


When you initially enter **Camera** mode, the **Image Capture** submode will be active. The icon at the right side of the **LCD Display** area indicates the current submode. After starting one, you can easily switch to the other, if desired.

- **Image Capture** submode (capture still images)
 - **Video Capture** submode (capture video clips)
 - **Composite** submode (capture still images and place in frame)
- 3 If in **Image Capture** or **Composite** submode, press the **Action** button on navigation pad to capture a still image.
 - 4 If in **Video Capture** submode, press the **Action** button to start recording the incoming video stream, and press it again to stop the recording process.



Press to enter the Camera mode



Confirm mode:

The image you captured will be frozen on the screen after you have captured an image, and the following four icons will appear :



- 1 To return to the previous screen, tap the Camera icon.
- 2 To immediately send a captured image/video, tap the mail icon then select an option from the **Send File** dialog box.
- 3 To delete the image press the rubbish bin option.
- 4 To view and edit the picture tap the **Album** icon.



(For detailed information about **Camera** and **Album**, see **Chapter 10 in User's Manual**.)



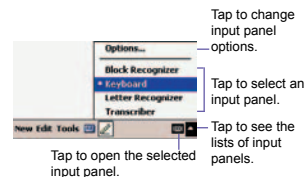
Write your first notes

Entering text using the input panel

Use the input panel to enter information in any program on your device. You can either type using the soft keyboard or write using **Letter Recognizer**, **Block Recognizer**, or **Transcriber**. In either case, the characters appear as typed text on the screen.



To show or hide the input panel, tap the **Input Panel** button. Tap the arrow next to the **Input Panel** button to see your choices.



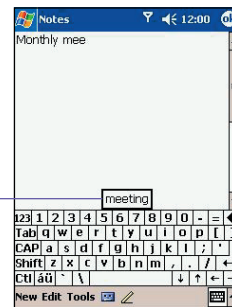
To type with the soft keyboard

When you use the input panel, your device anticipates the word you are typing or writing and displays it above the input panel. When you tap the displayed word, it is inserted into your text at the insertion point. The more you use your device, the more words it learns to anticipate.

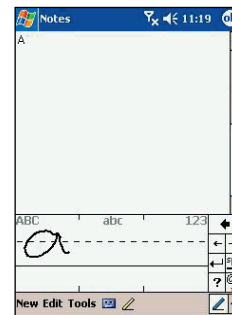
To use Letter Recognizer



- 1 With **Letter Recognizer** you can write letters using the stylus just as you would on paper.
- 2 Tap the arrow next to the Input Panel button and then **Letter Recognizer**.
- 3 Write a letter in the box.
- 4 When you write a letter, it is converted to typed text that appears on the screen. For specific instructions on using **Letter Recognizer**, with **Letter Recognizer** open, tap the question mark next to the writing area.



Tap here if this is the right word.

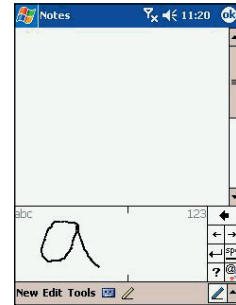


Write your first notes (Cont'd)

To use Block Recognizer



- 1 With **Block Recognizer** you can input character strokes using the stylus that are similar to those used on other devices.
- 2 Tap the arrow next to the Input Panel button and then **Block Recognizer**.
- 3 Write a letter in the box.
- 4 When you write a letter, it is converted to typed text that appears on the screen. For specific instructions on using **Block Recognizer**, with **Block Recognizer** open, taps the question mark next to the writing area.



To switch to Transcriber

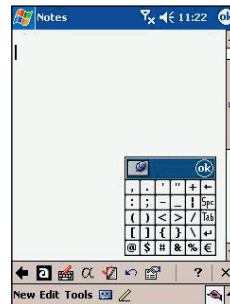


- 1 With **Transcriber** you can write anywhere on the screen using the stylus just as you would on paper. Unlike **Letter Recognizer** and **Block Recognizer**, you can write a sentence or more of information. Then, pause and let **Transcriber** change the written characters to typed characters.
- 2 Tap the arrow next to the **Input Panel** button and then **Transcriber**.
- 3 Write anywhere on the screen.
- 4 For specific instructions on using **Transcriber**, with **Transcriber** open, tap the question mark in the lower right hand corner of the screen.



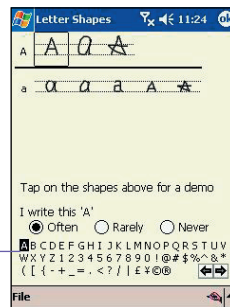
To punctuate in Transcriber

- 1 Tap the keyboard on the toolbar.
- 2 Tap **OK** to hide the keyboard.



To see how to write a letter in Transcriber

- 1 Tap “a” on the toolbar.
- 2 In the screen that appears, select the letter you want to learn about, and then tap on one of the examples given above.
- 3 For specific instructions on using **Transcriber**, with **Transcriber** open, tap the question mark in the lower right hand corner of the screen.




Click on a letter
for a demonstration

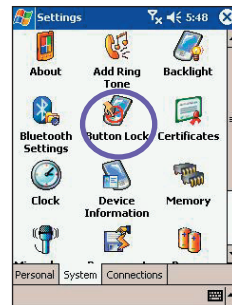
Secure your Pocket PC phone

You can customize the level of security you want to have on your Pocket PC phone by locking the keypad, the entire device, or the **SIM** card.

Locking the keypad


The keypad lock turns off the keypad functionality. This is a helpful feature if, for example, your Pocket PC phone is turned off and in your pocket, and you want to prevent accidental keypress from pressing a button etc .

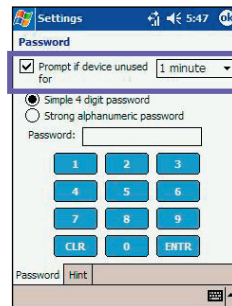
- 1 Tapping  → **Settings** → **System** tab → **Button Lock**
- 2 Select **Lock all buttons except Power button**.
- 3 To unlock your keypad, tap **Do not lock buttons**.



Locking your phone

Locking your Pocket PC phone prevents access to personal data. When you enable this feature, your Pocket PC phone will automatically lock after a specified time of inactivity. A screen will be displayed requiring your Pocket PC phone lock password before access is granted.

- 1 Tap  → **Settings** → **Personal** → **Password**.
- 2 Select the type of password you would like to use : **Simple 4 digit password** or **Strong alphanumeric password**.



A strong password must have at least **7 characters** that are a combination of uppercase and lowercase letters, numerals, and punctuation. For detail information about password settings, please see [Chapter 5](#).

- 3 Enter the password and, if necessary, confirm the password.
- 4 Select how long your mobile device must be turned off before the password is required for using the device by tapping **Prompt if device unused for**.

Locking the SIM card

You can protect your Pocket PC phone from unauthorized use by assigning a type of password called a **PIN** (Personal Identification Number). Your first **PIN** will be given to you by your mobile phone service provider.

- 1 From the Phone keypad, tap **Tools** → **Options** → **Phone** tab.
- 2 Select **Require PIN when phone is used**.
- 3 To change the PIN at any time, tap **Change PIN**.



Emergency calls can be placed at any time, without requiring a **PIN**.



Information Guide

The following table is a guide to finding information to help you use your phone.

Information about	Source
Making a phone call	Pocket PC Phone 2003 User's Guide: <i>Chapter 3, Phone Calls</i>
Sending MMS, E-mail and SMS messages	Pocket PC Phone 2003 User's Guide: <i>Chapter 8, Messaging Features</i>
Taking a photograph	Pocket PC Phone 2003 User's Guide: <i>Chapter 10, Using your camera</i>
Programs on the phone	Pocket PC Phone 2003 User's Guide <i>Chapter 9, Companion Programs</i>
Additional programs that can be installed on the phone	<i>Pocket PC Phone 2003 Companion CD</i>
Connecting to and synchronizing with a desktop computer	Pocket PC Phone 2003 User's Guide : <i>Chapter 4, Synchronizing Information</i>
Text entry	Pocket PC Phone 2003 User's Guide <i>Chapter 2, Knowing your Pocket PC</i>
Last-minute updates and detailed technical information	<i>Readme files</i> , located in the Microsoft Active-Sync folder on the desktop computer.
Up-to-date information on your Pocket PC phone 2003	http://www.microsoft.com/mobile